

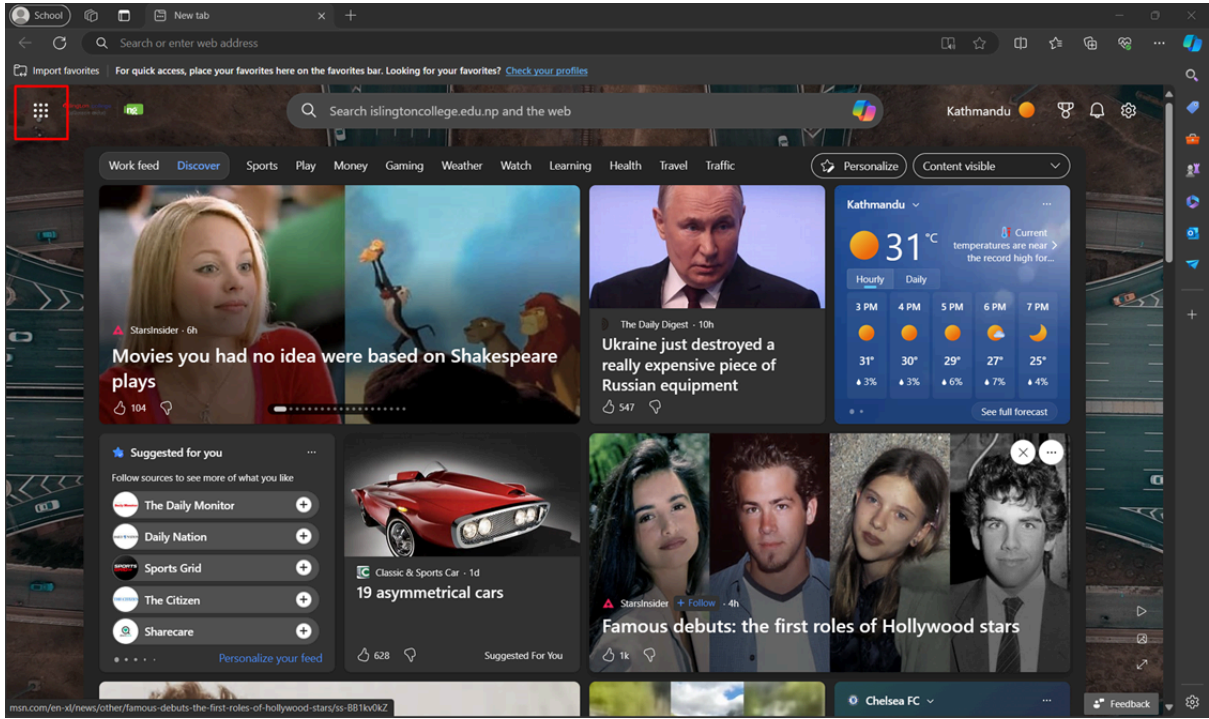
How to install IBM_SPSS Statistics.



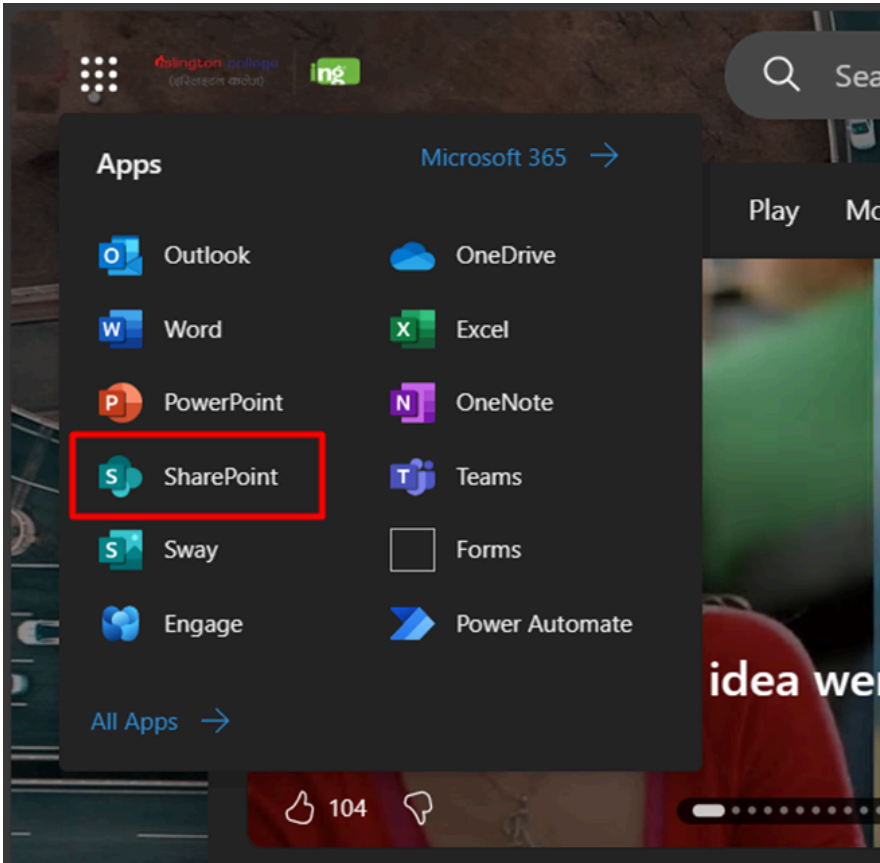
IBM SPSS
Statistics

Download IBM SPSS 29 for M365 Users

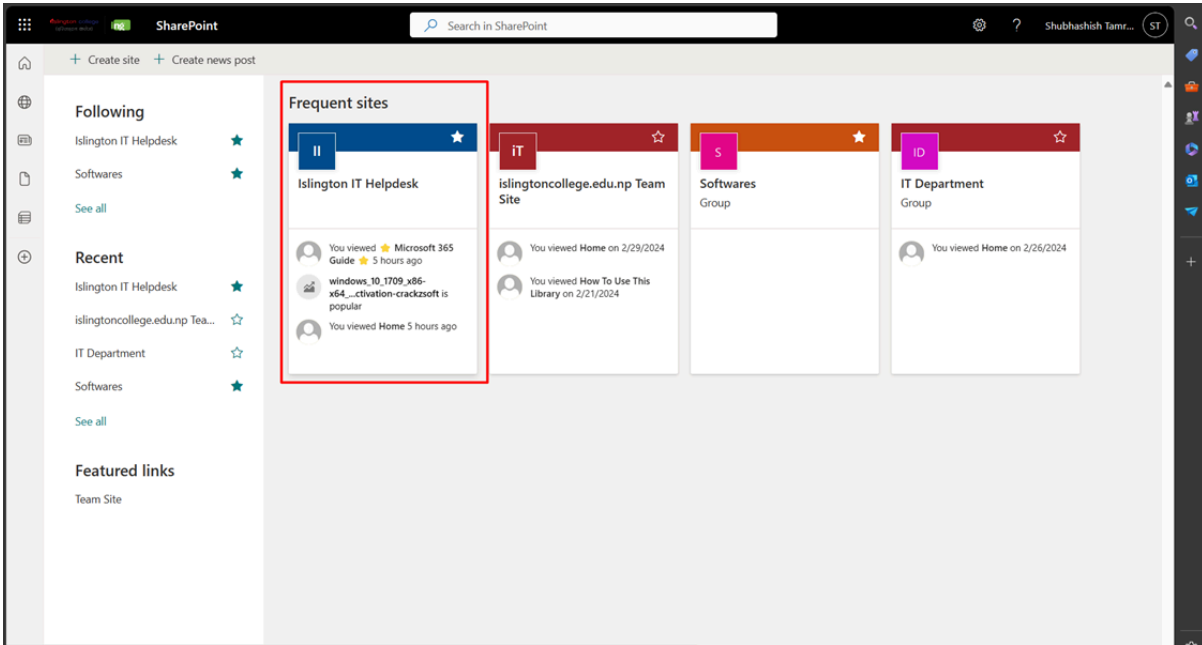
Step 1: Open your web browser.



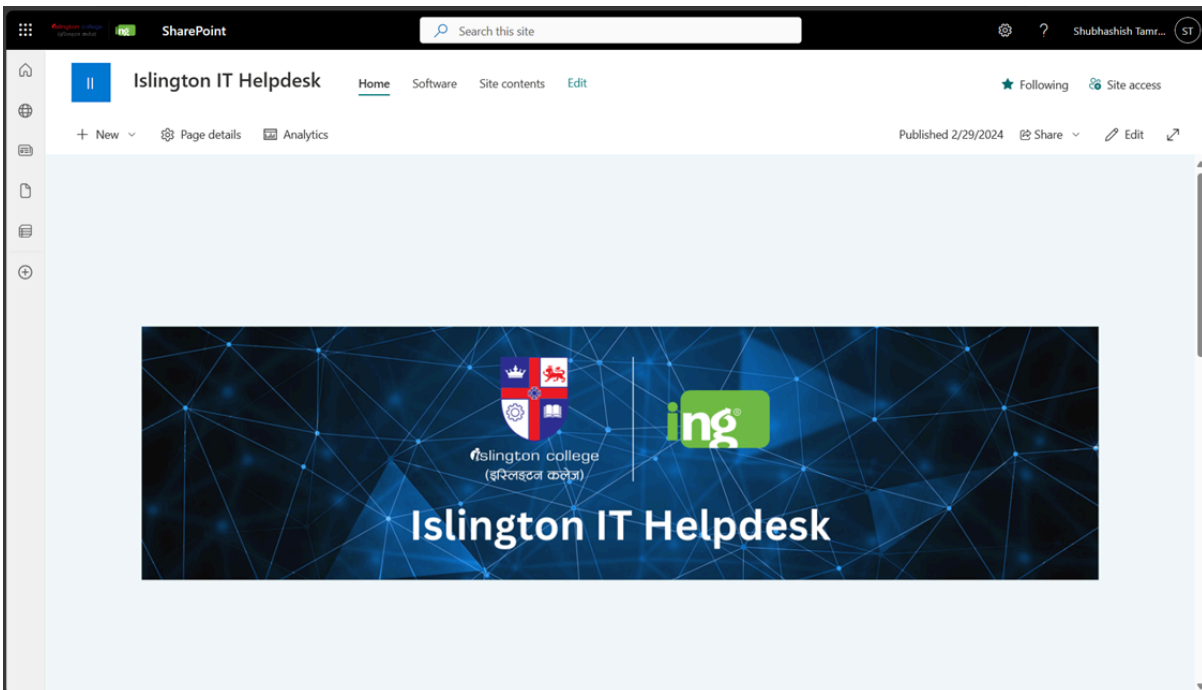
Step 2: Open the Application bar and make sure you are signed in from your Islington College email address. Then navigate to SharePoint.



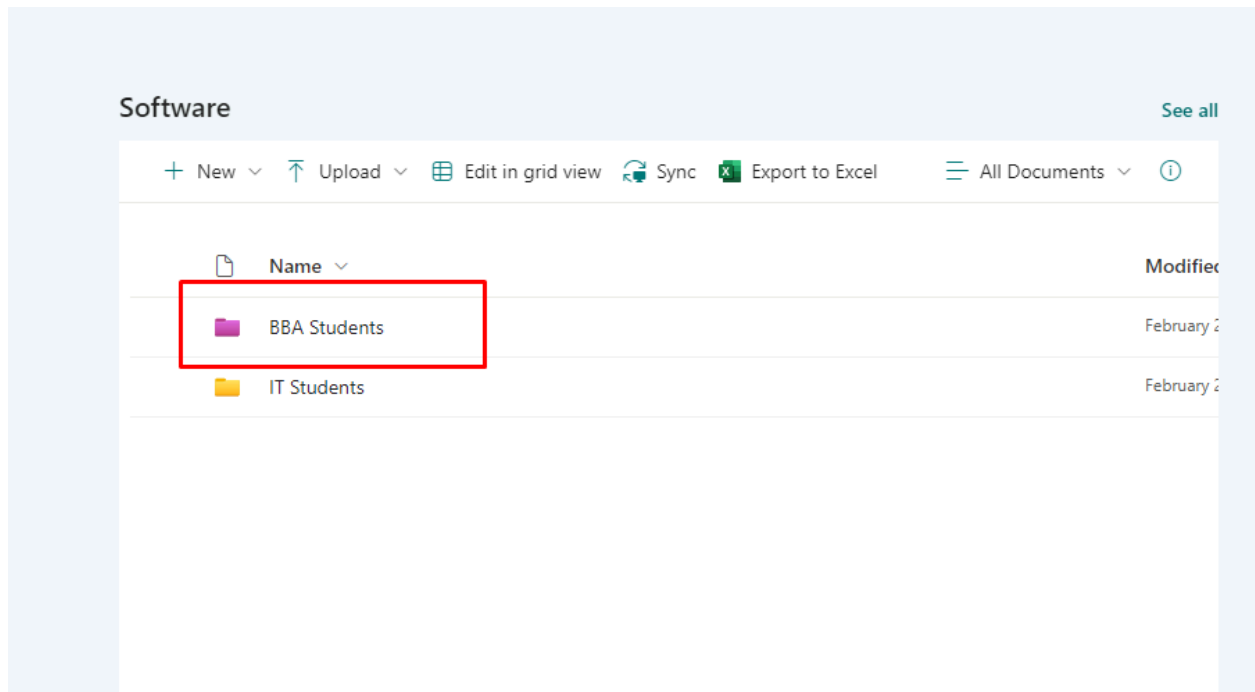
Step 3: Click on the “Islington IT Helpdesk” option from the Frequent sites.



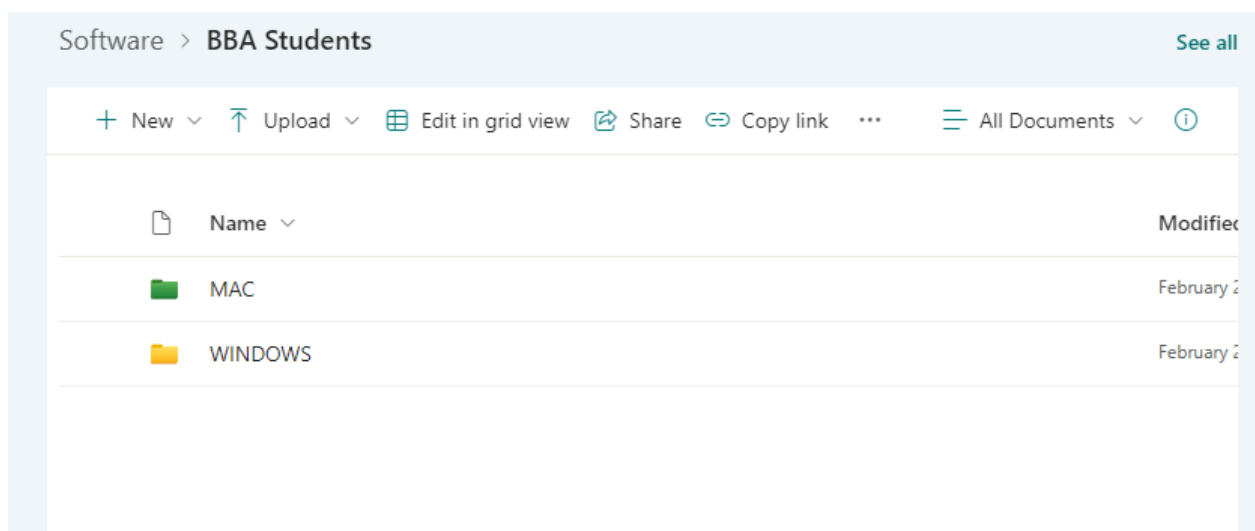
Step 4: You will land on this page.



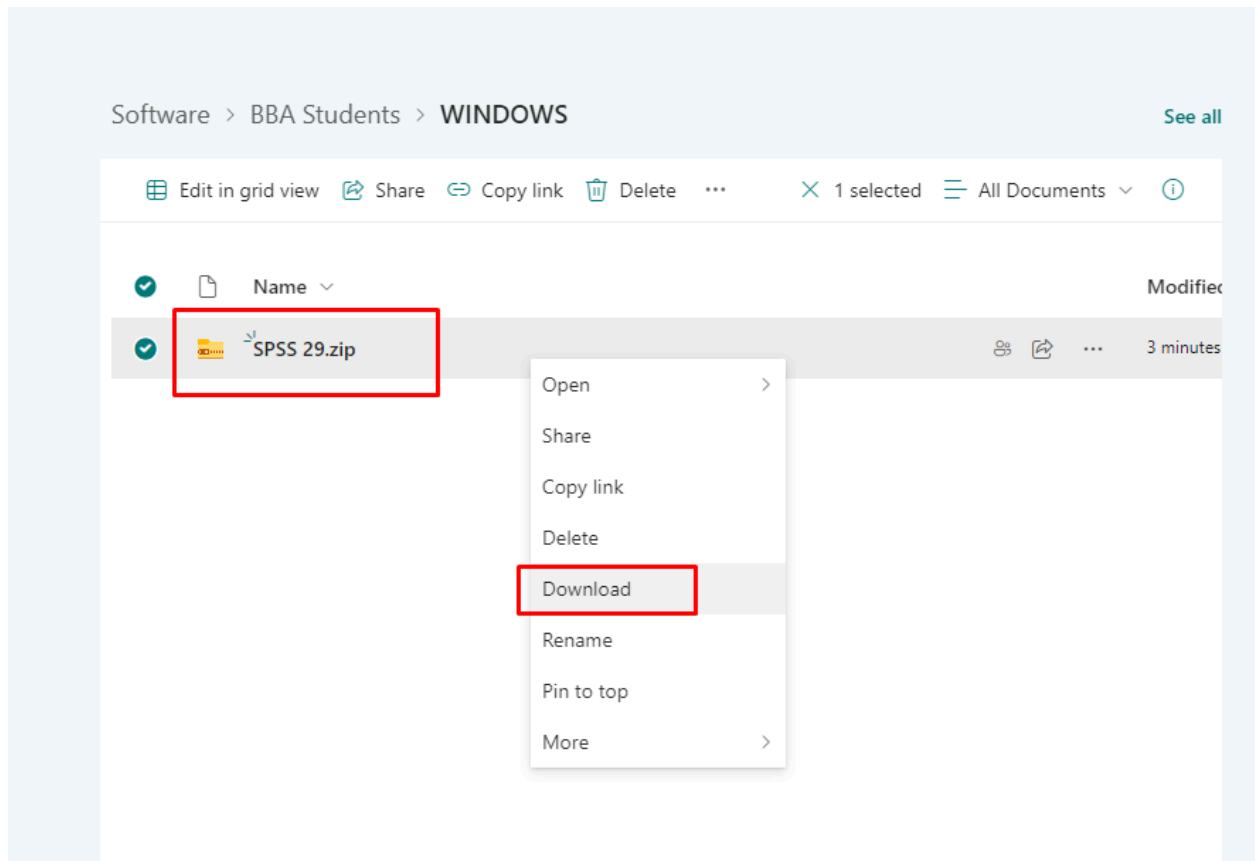
Step 5: Double-click the “BBA Students” folder.



Step 6: Double-click the necessary folder according to your PC.



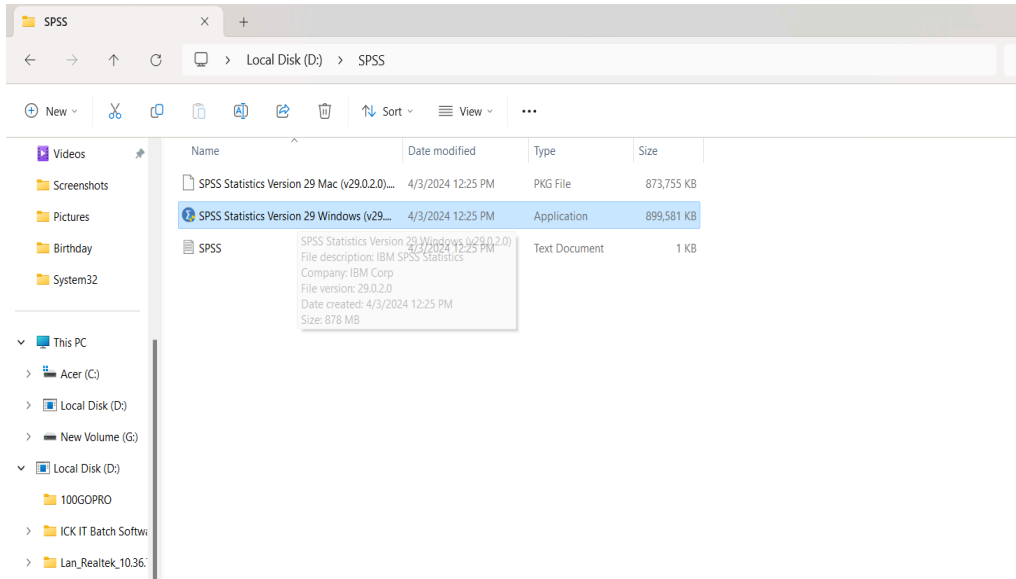
Step 7: Download the SPSS 29 folder.



Installing IBM SPSS_Statistics 29 on Windows.

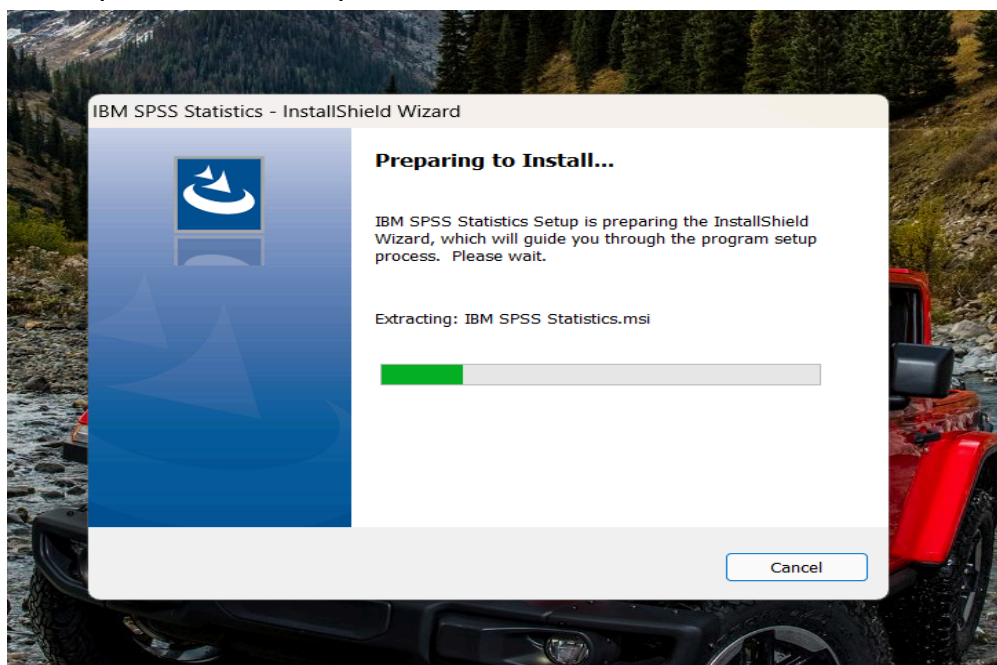
Step 1:

Copy the SPSS installation file from the hard drive to the desired location.



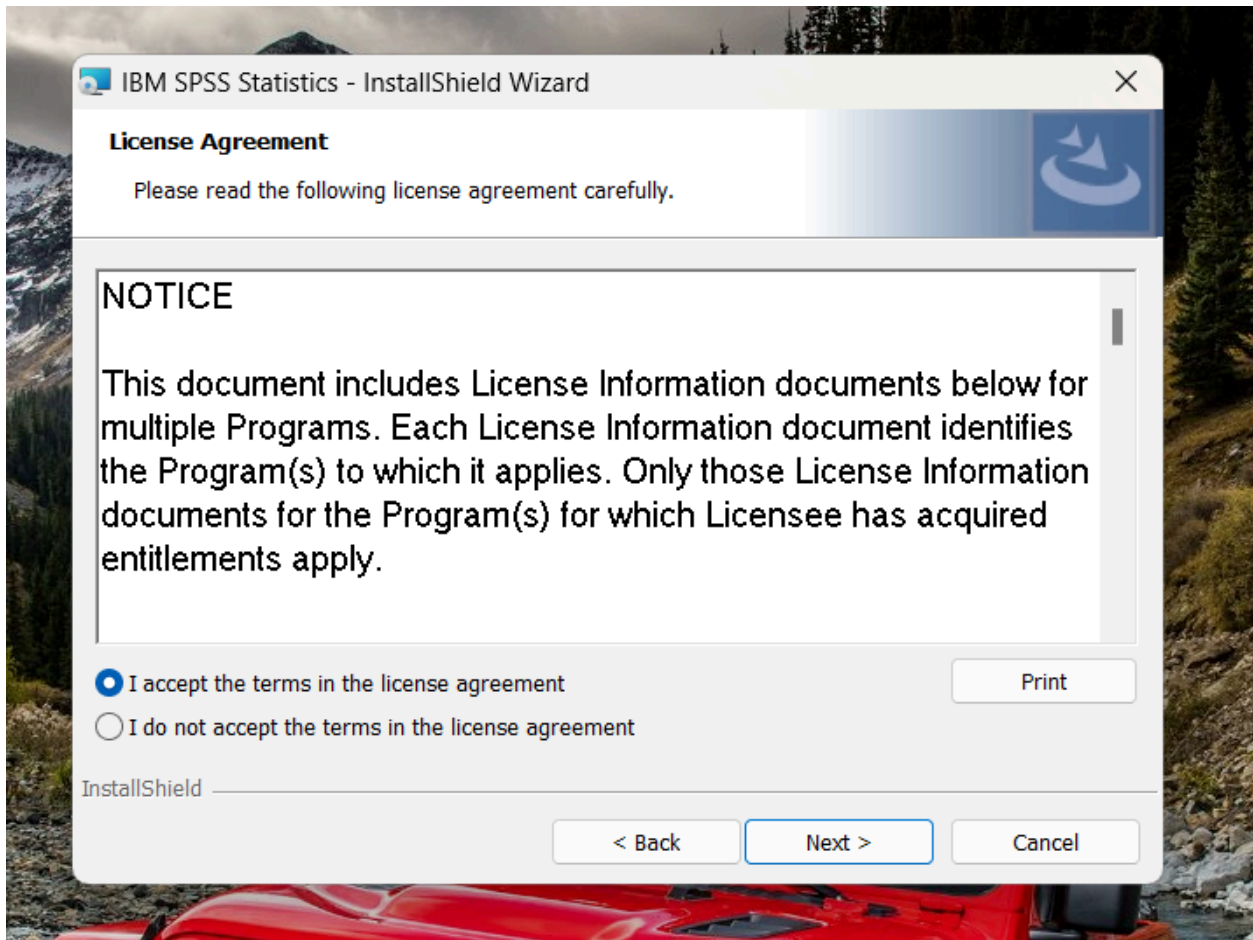
Step 2:

Open the setup file and allow permission to install.

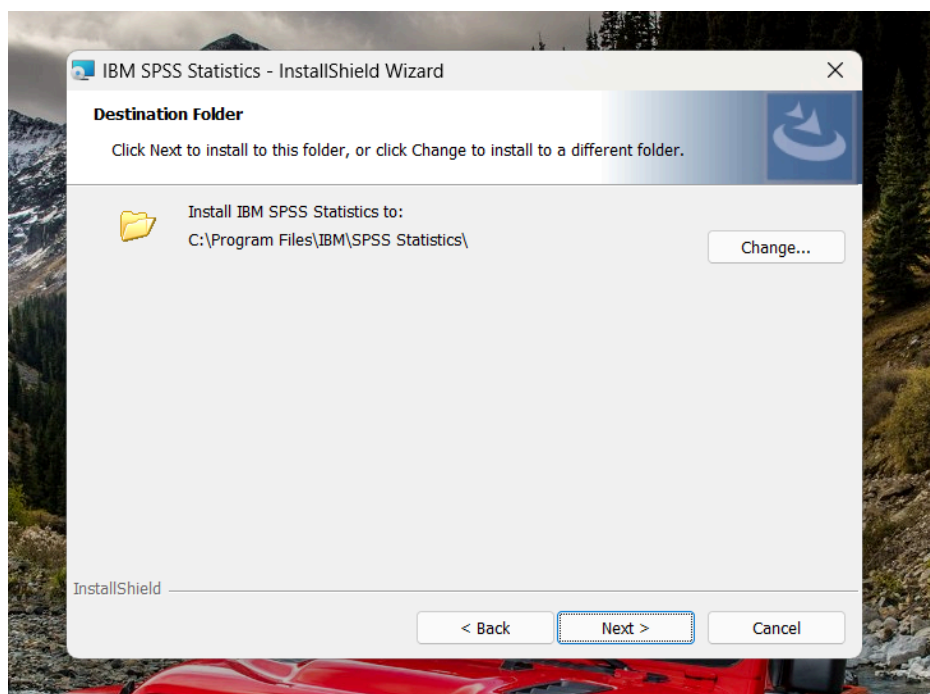


Step 3:

Accept the license agreement and press 'NEXT'.

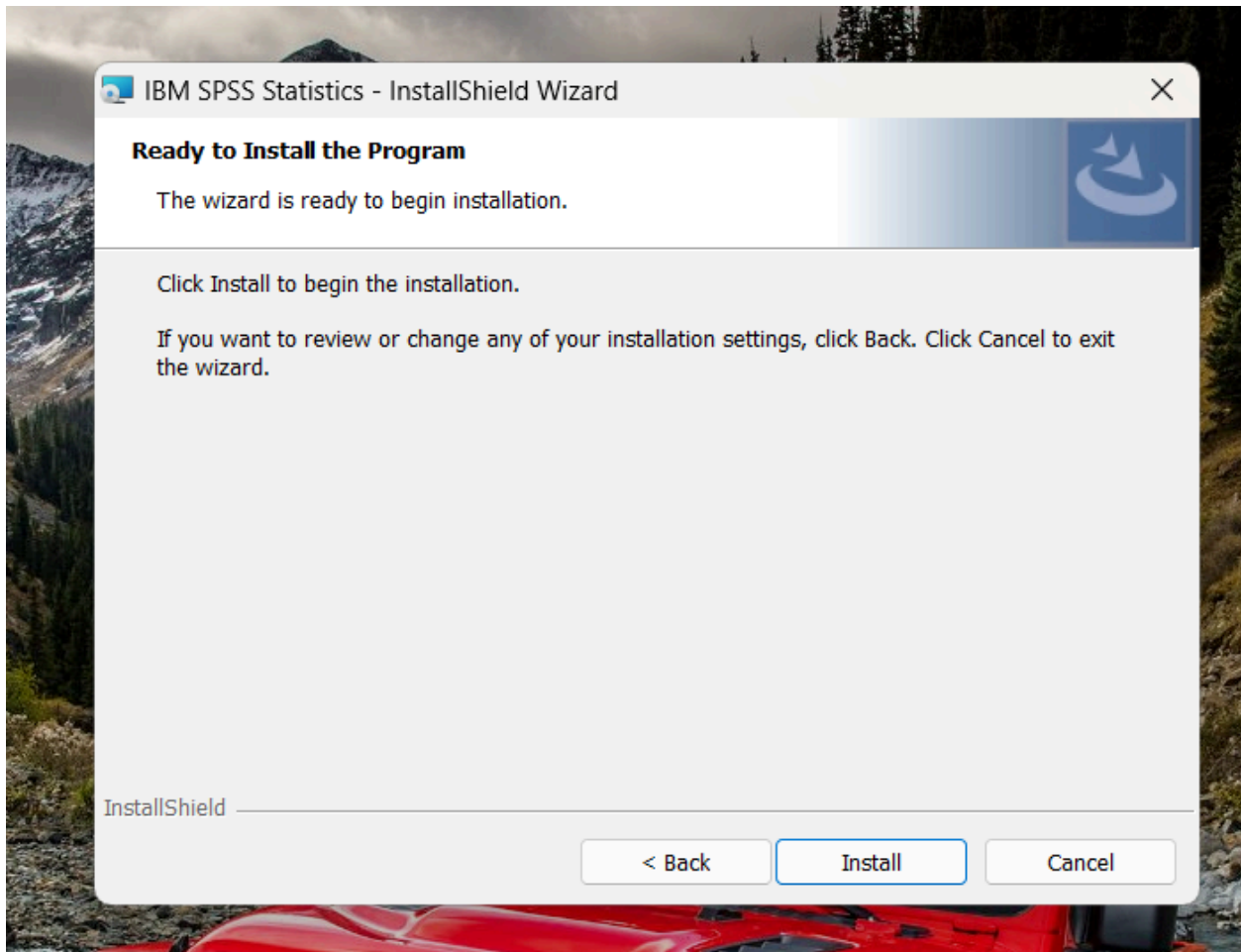


Then specify the path where you install SPSS.



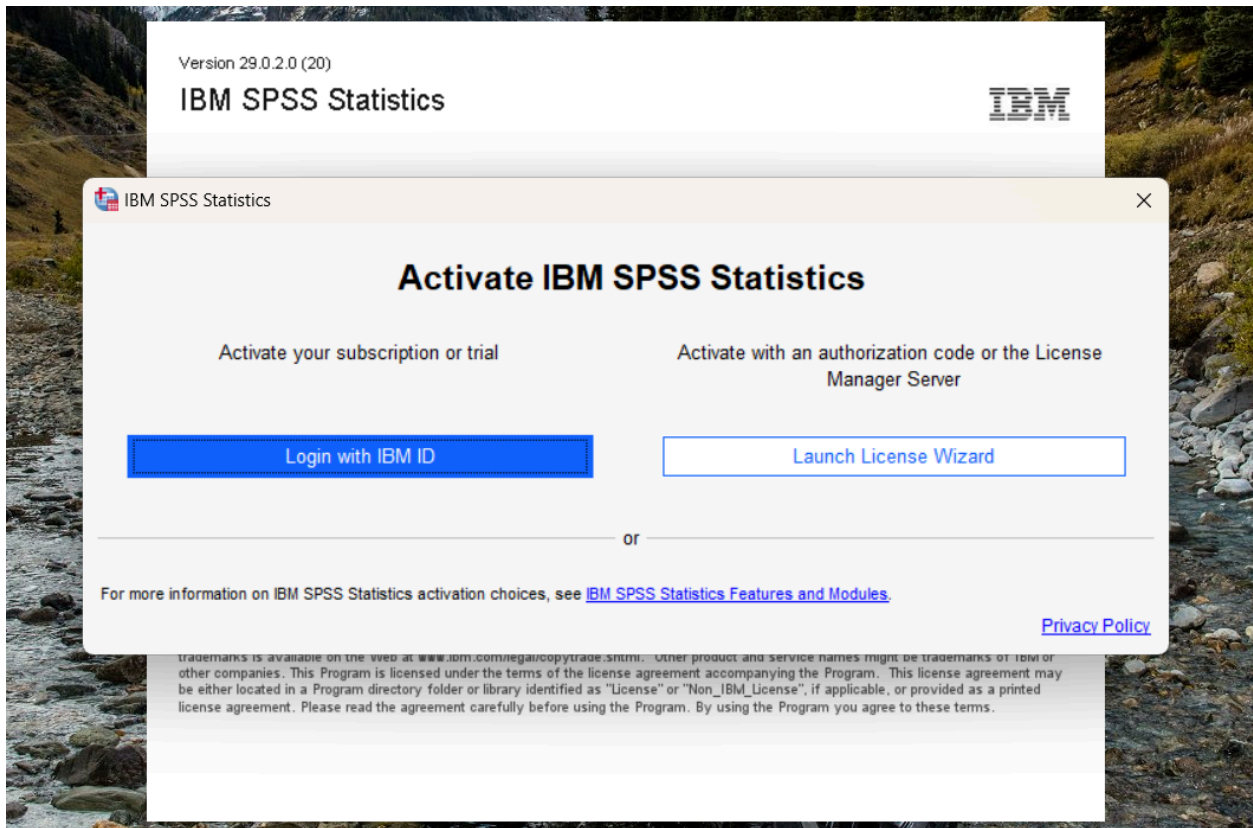
Step 4:

Press 'Next' and 'Install'.

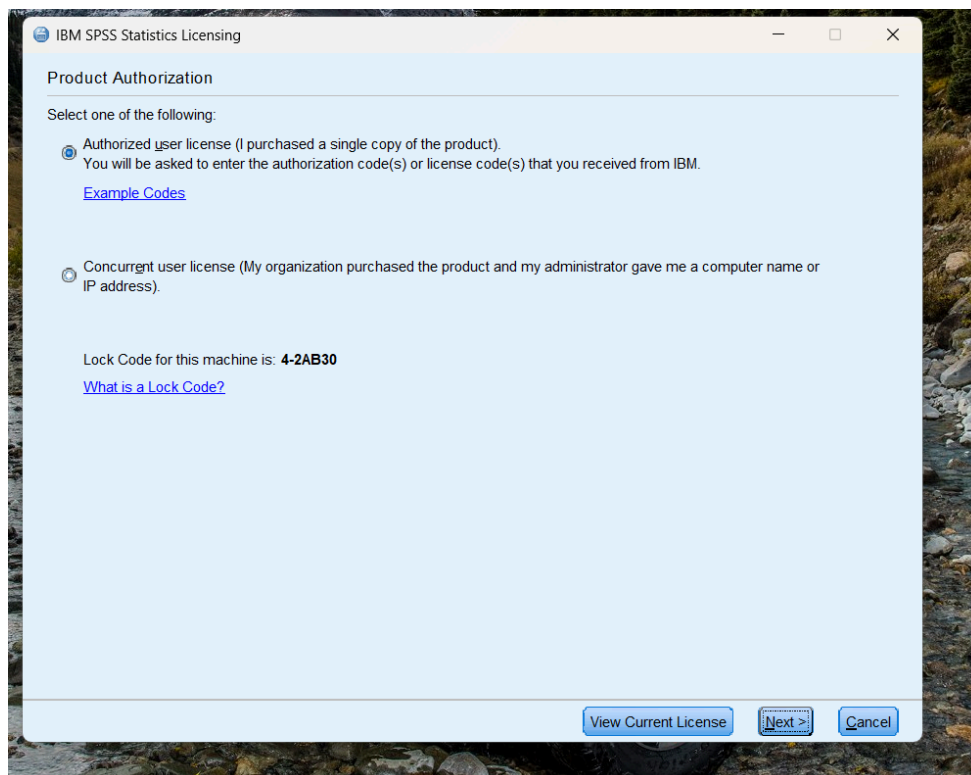


Step 5:

After installation, open IBM_SPSS and press 'Launch License wizard.'

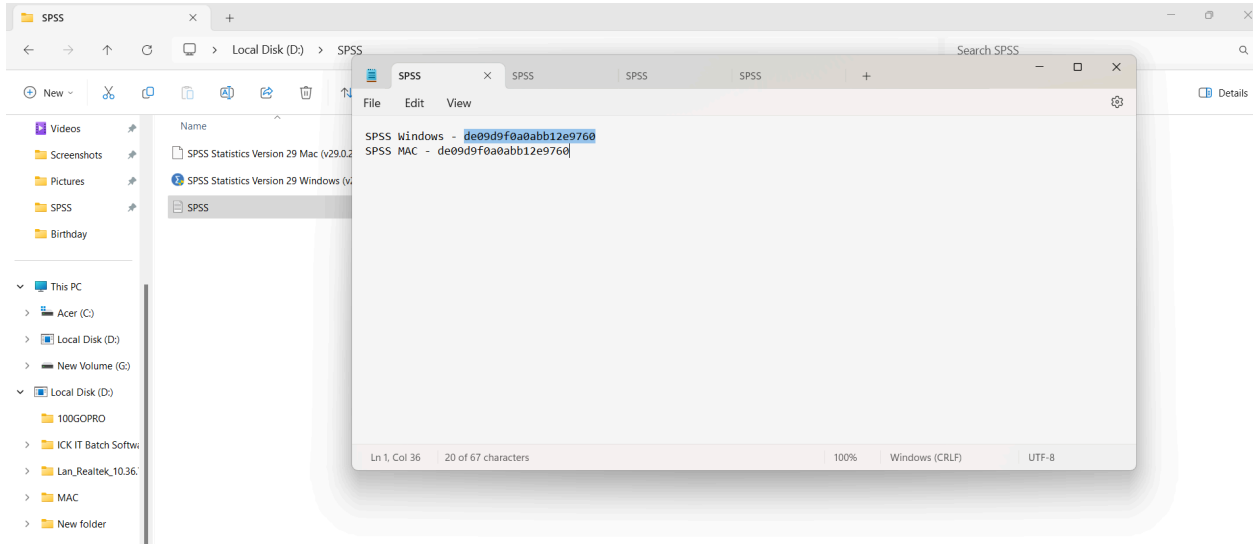


Press 'Next'.

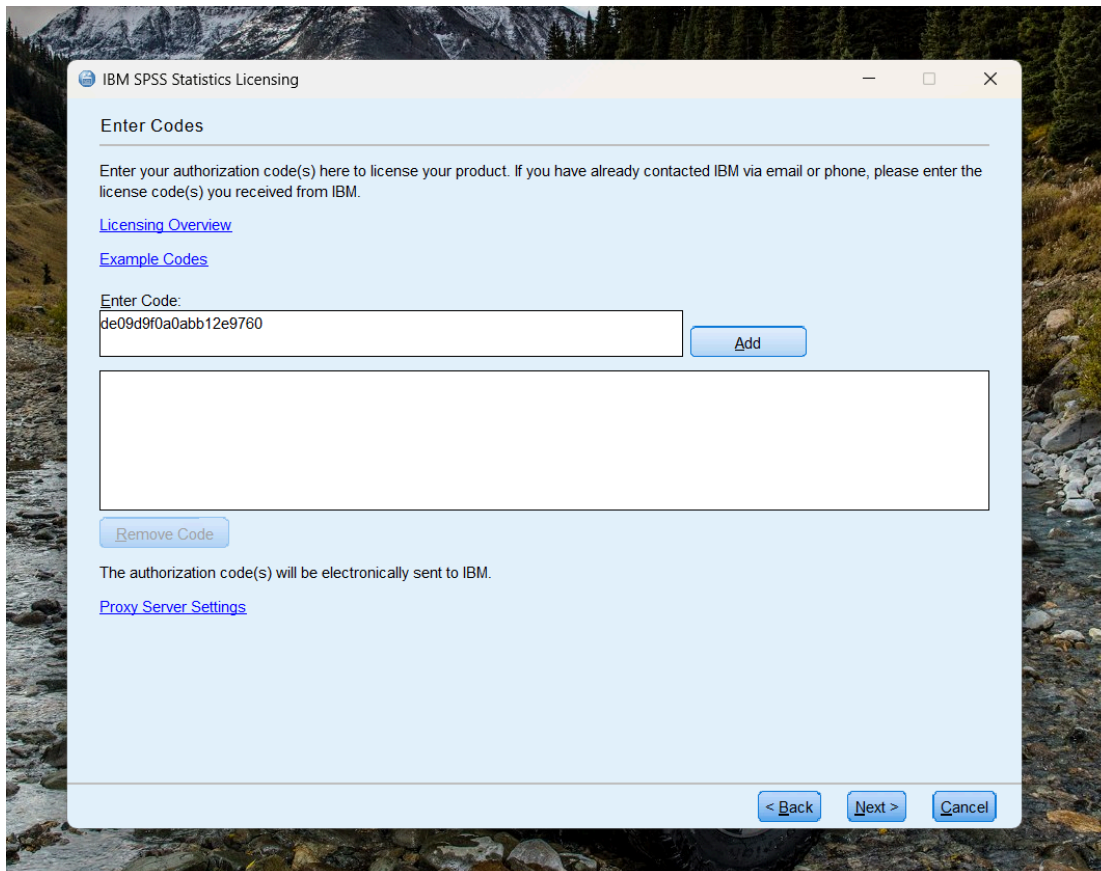


Step 6:

Now copy the license key from hard drive>SPSS>SPSS.txt

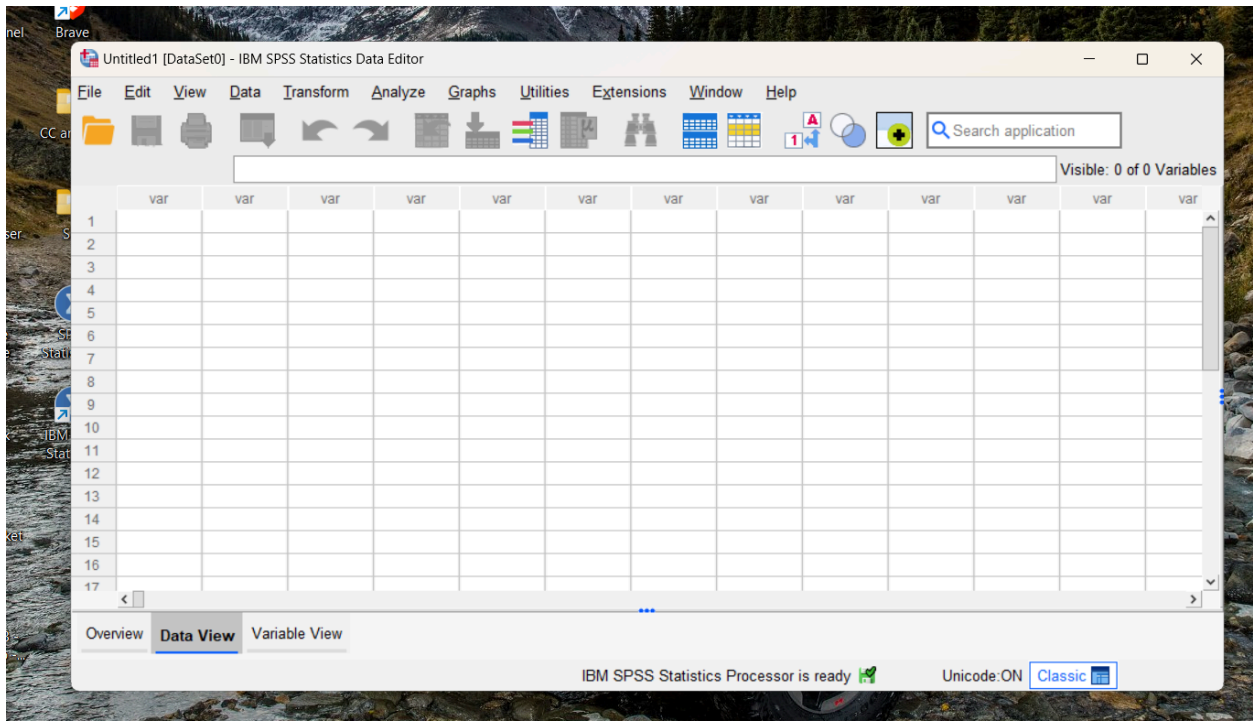


Then press 'Add' and 'Next'.



Step 7:

After your key is validated, you can run IBM_SPSS_Statistics.



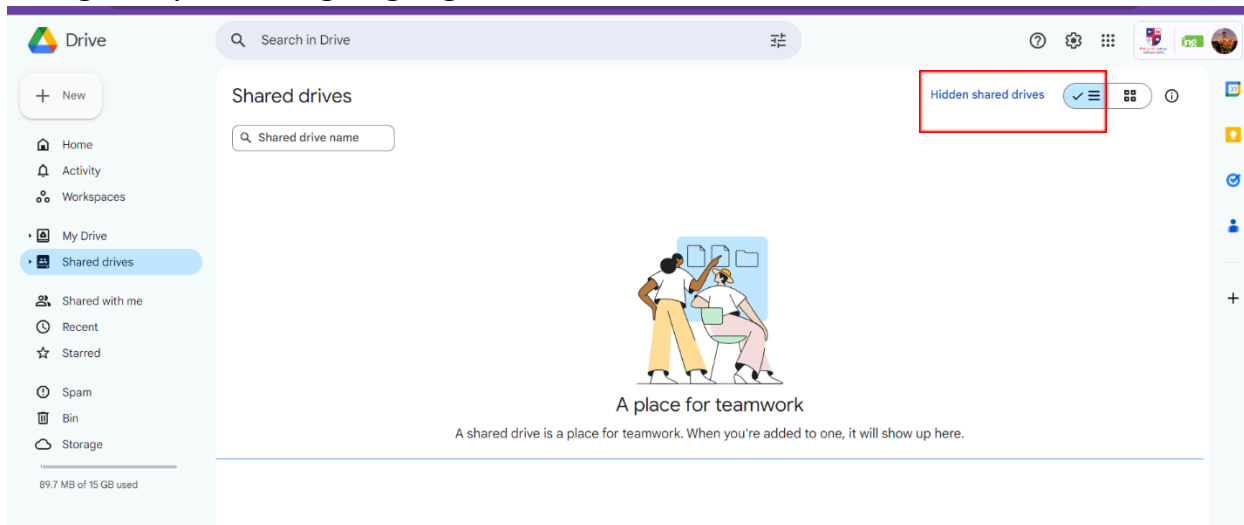
Installing IBM_SPSS on Mac

To install IBM_SPSS on mac, follow the same steps as mentioned for windows. But copy the License key for mac as given in SPSS.txt file in hard-drive.

Installation for Windows(Cracked Version)

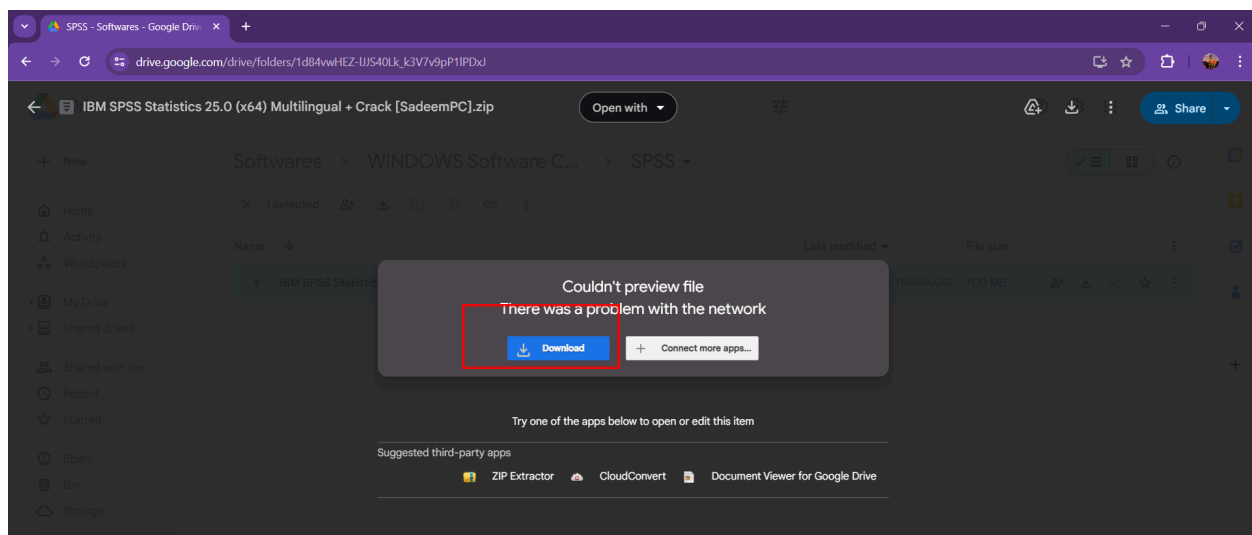
Step 1:

Login to your college's google drive and in Shared Drives>Hidden shared drives.



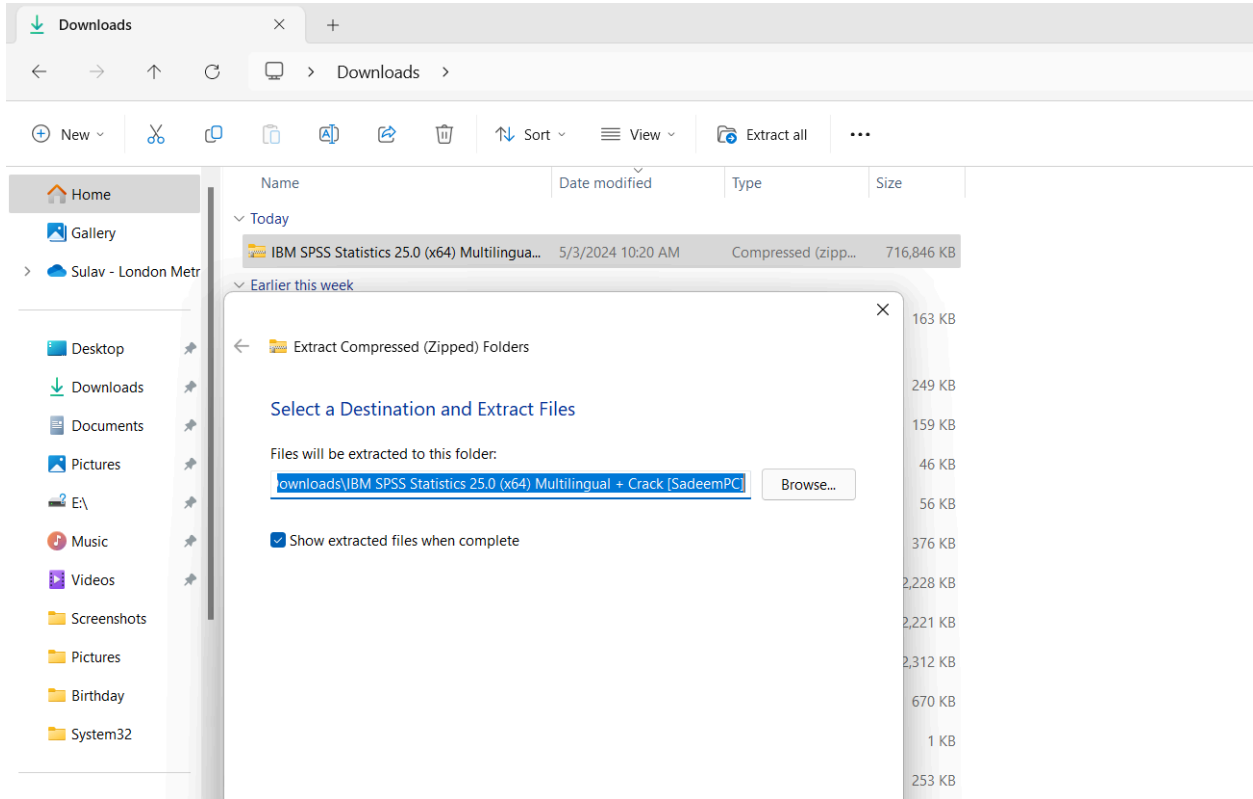
Step 2:

Then go to software>WINDOWS Software collection> IBM SPSS.



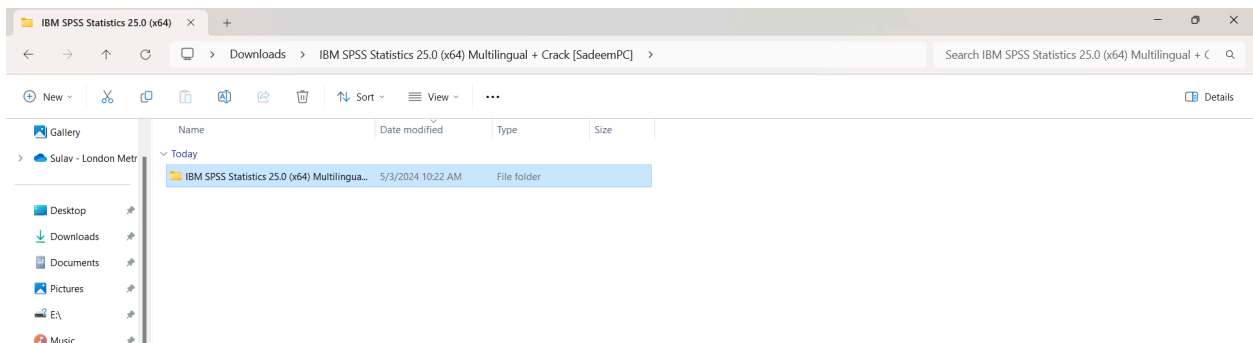
Step 3:

Then in the downloaded destination open the SPSS folder and extract it on desired destination.



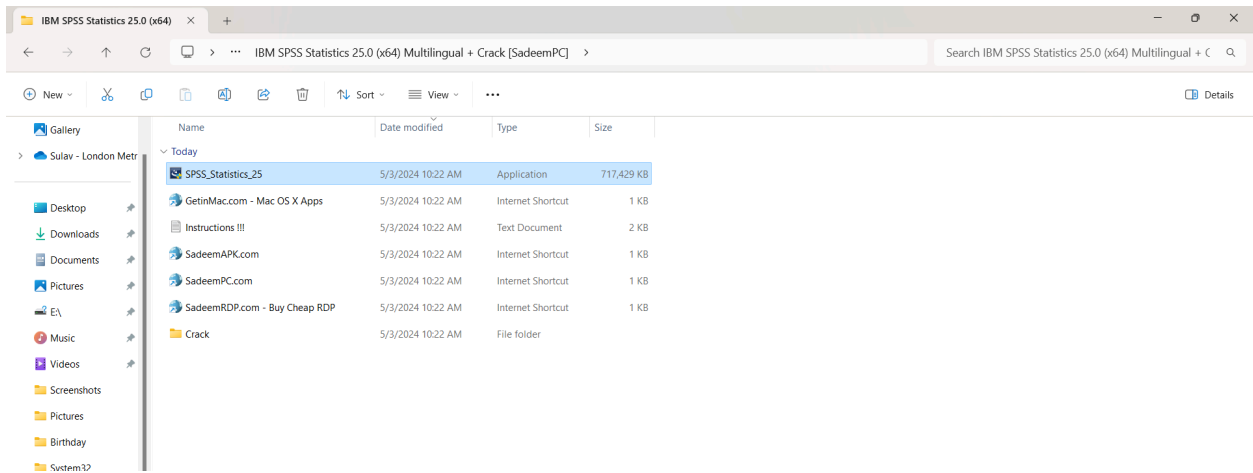
Step 4:

From the extracted folder, open the IBM SPSS file.



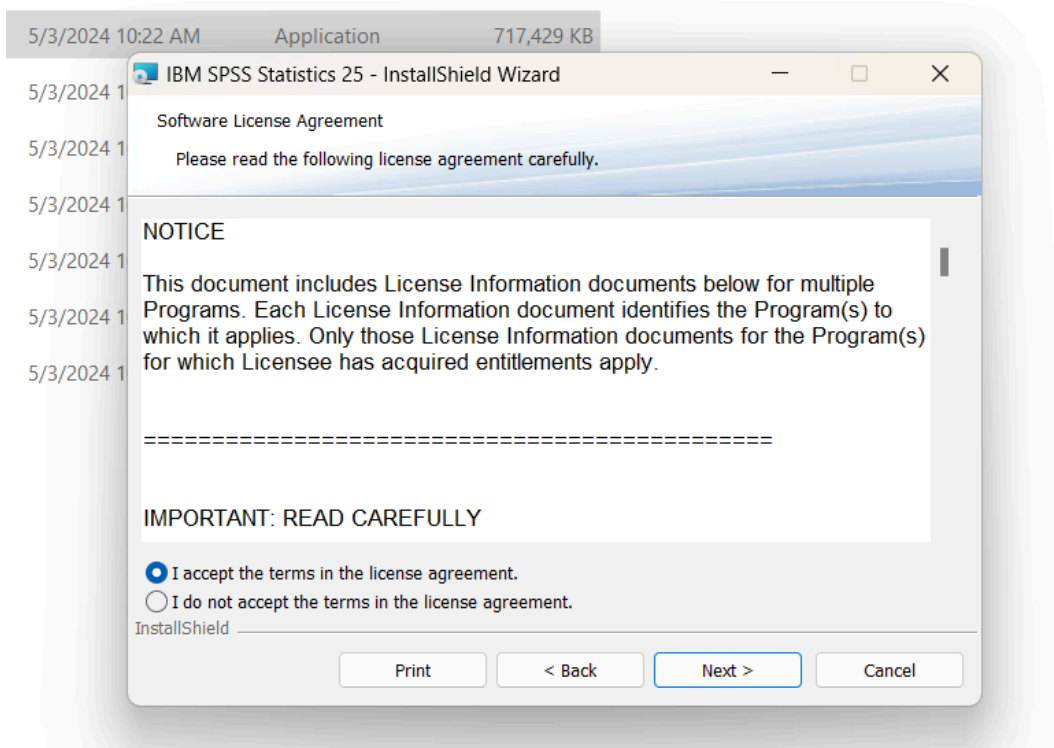
Step 5:

Open and install the SPSS_Statistics setup file in default settings.



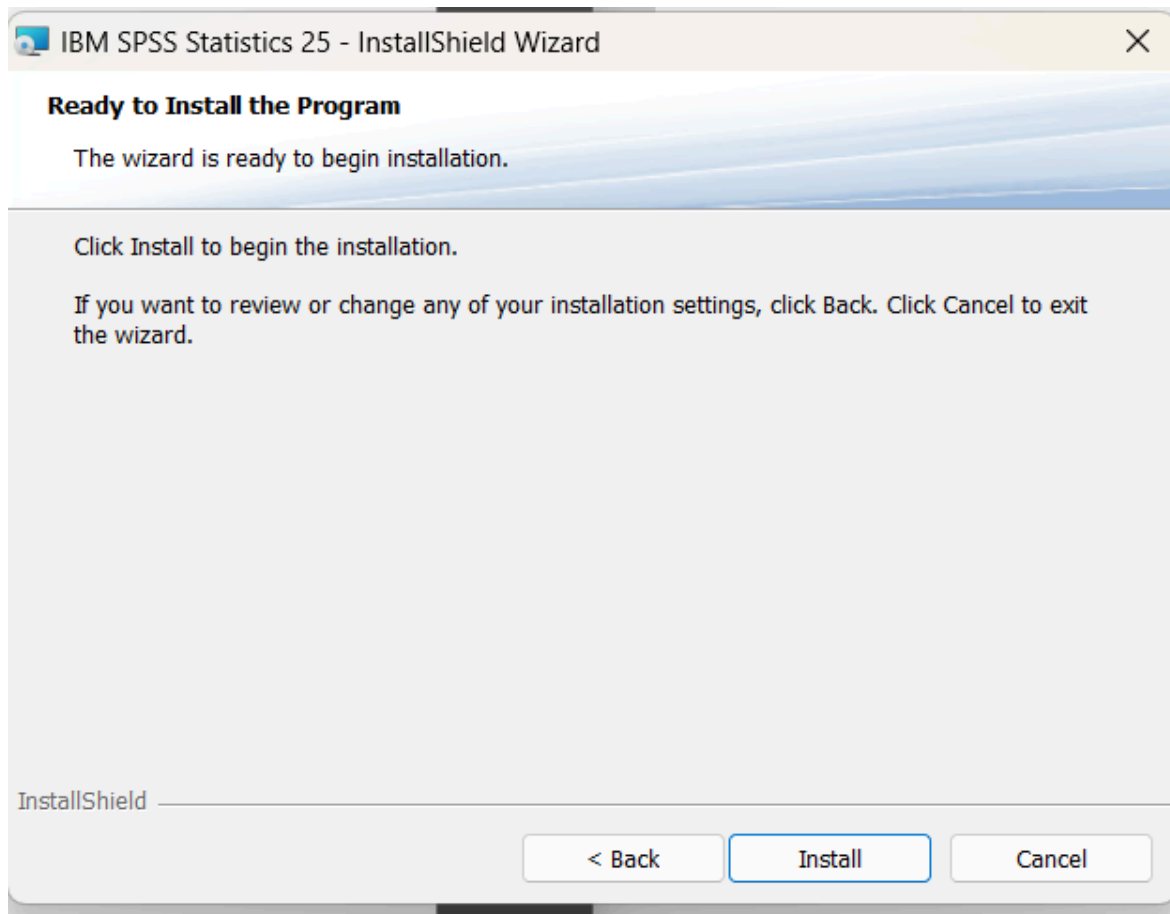
Step 6:

Agree to license agreement and press 'Next'.



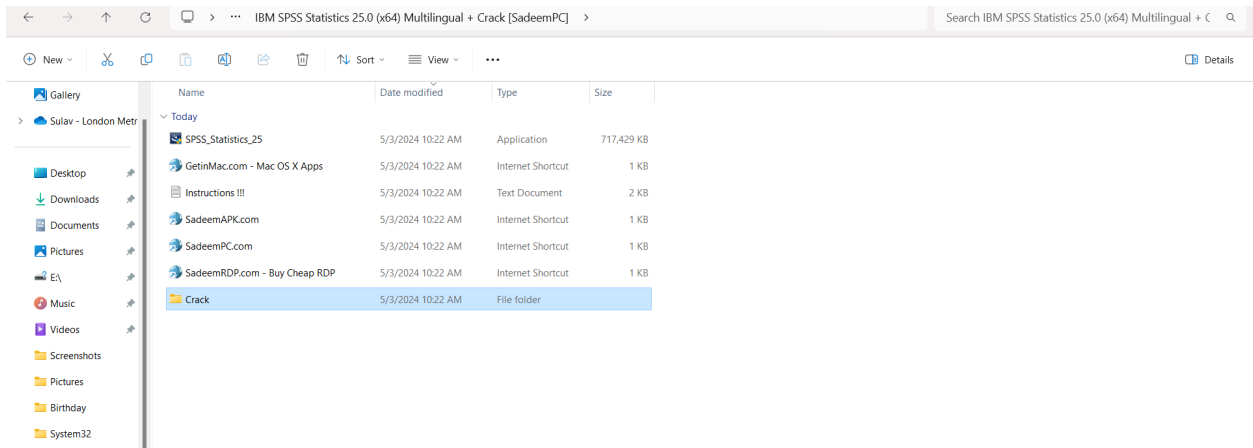
Step 7:

Press 'Install'.



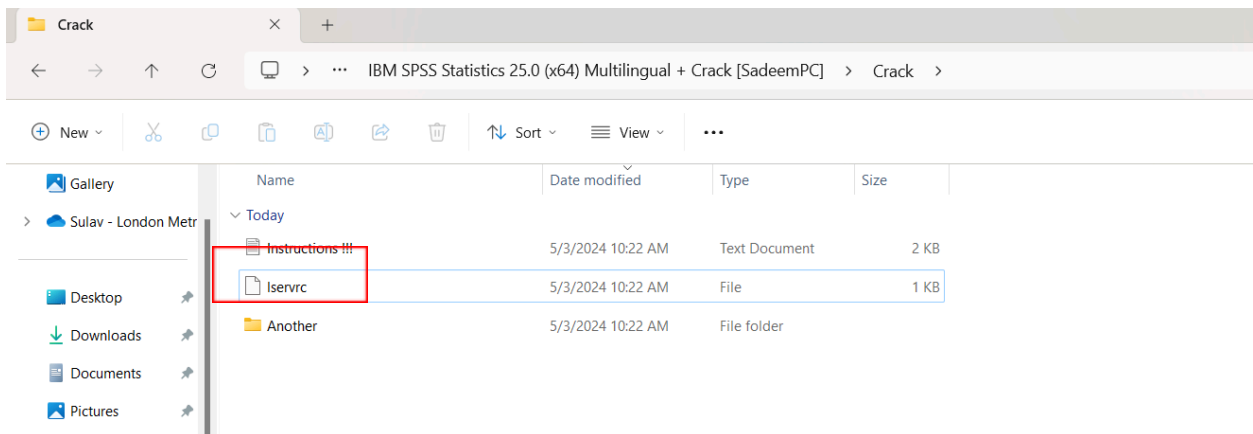
Step 8:

Now in the IBM SPSS folder, go to the Crack folder.



Step 9:

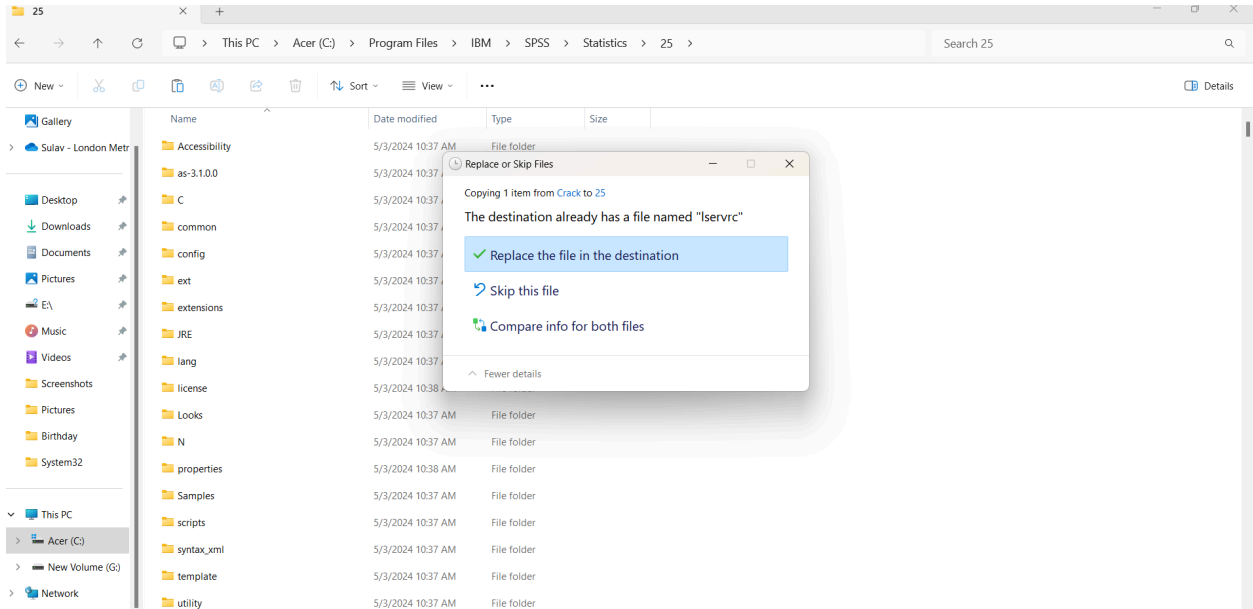
Inside the Crack folder, copy the 'lserverc' file.



Step 10:

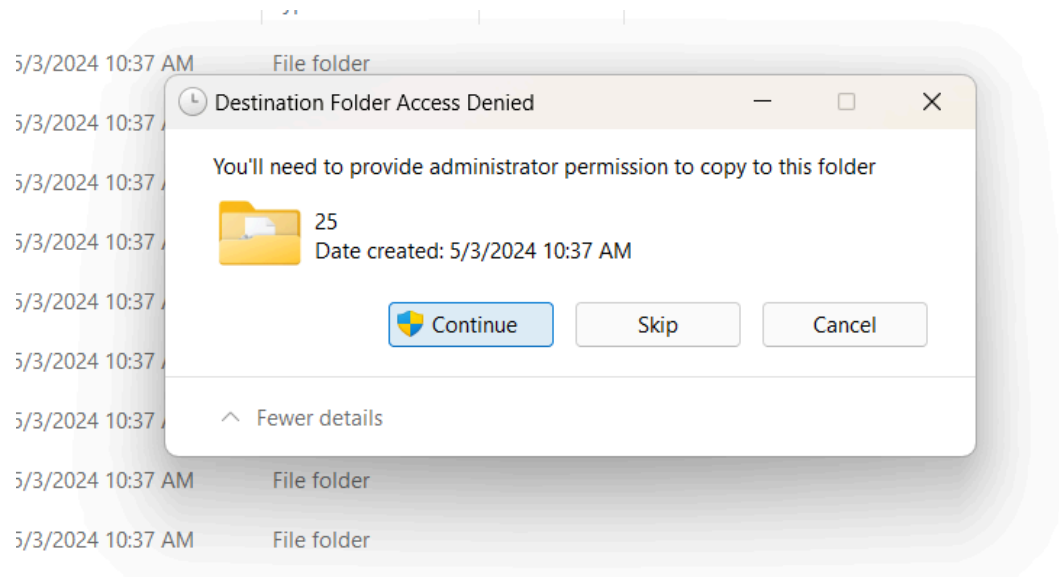
Paste the 'Iserverc' file in **program files>IBM>SPSS>Statistics>25**

Replace the file in this destination.



Step 11:

Press 'continue'



Step 12:

After cracking, the software should run.

